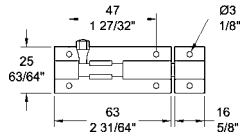


Shoot Bolt

CHROME PLATED

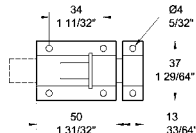


46 760 1010

Shoot bolt, chrome plated

Shoot Bolt

STAINLESS STEEL

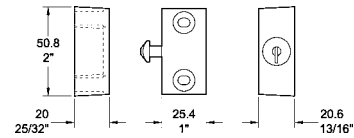
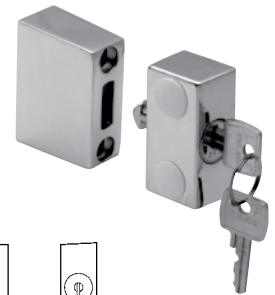


16 7 3863

Shoot bolt, stainless steel

Edgemoount Lock

- Four disc cylinder
- Can install in factory or on site
- Vertical and horizontal adjustments
- Compatible with glass doors
- Black plastic caps included
- Keyed alike
- **Material:** Chrome plated Zamak body with stainless steel faced cylinder

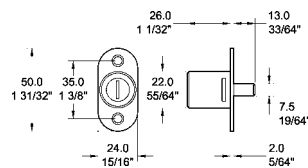


100SL

Security Lock, Strike Height: 20mm (25/32")

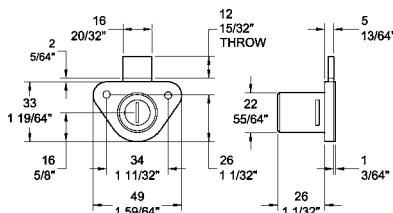
Locks

Plunger Lock



45 720 0490 Plunger lock, chrome plated

Drawer Lock



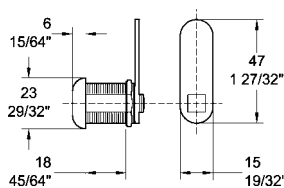
45 710 0370 Drawer lock, chrome plated

Utility Locks

- **Finish:** Chrome plated



45 730 4760



- 45 730 4740** Utility lock, 16 mm (5/8"), keyed alike
- 45 730 4742** Utility lock, 16mm (5/8"), keyed to differ/master key
- 45 730 4750** Utility lock, 22mm (7/8"), keyed alike
- 45 730 4752** Utility lock, 22mm (7/8"), keyed to differ/master key
- 45 730 4760** Utility lock, 27mm (1 1/16"), keyed alike
- 45 730 4762** Utility lock, 27mm (1 1/16"), keyed to differ/master key
- 45 730 4765** Utility lock, 32mm (1 1/4"), keyed alike
- 45 730 4767** Utility lock, 32mm (1 1/4"), keyed to differ/master key
- 45 730 3000** Master key (keyed to differ)
- 92 400** Spare key (keyed alike)

Through Door Locks

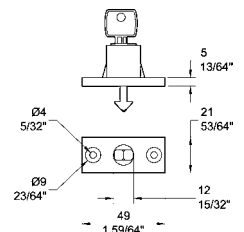
- **Material:** Zamak
- **Finish:** Chrome plated

For all types of cabinets

- For left and right handed doors



D101-1-(235) Through door lock



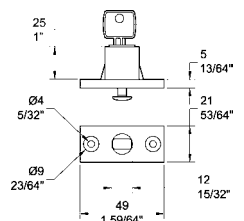
Small Offset :: For all types of cabinets & doors

Lock for small offsets with 6mm keep

- For left and right handed doors or drawers



D102-1-(235) Through door lock for small offsets

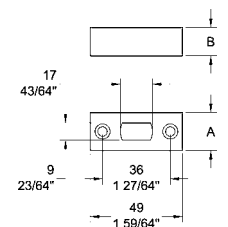


Keeps for Edgemoount and Through Door Locks



D100-1-6

D100-1-20



Product Code	Description	Dim A	Dim B	Fixing Holes
D100-1-26	26mm keep	15mm (19/32")	26mm (1 1/32")	Counterbored - 5mm (13/64") - 8mm (5/16")
D100-1-20	20mm keep	19mm (25/32")	20mm (25/32")	Counterbored - Slotted 5mm (13/64") x 6.5 (1/4") - 8mm (5/16")
D100-1-12	12mm keep	20mm (25/32")	12mm (15/32")	Counterbored - 4mm (13/64") - 8mm (5/16")
D100-1-6	6mm keep (for D102-1 lock)	19mm (3/4")	6mm (15/64")	Countersunk - 4.5mm (11/64") - 8mm (5/16")